



PureWick™ Flex Female External Catheter

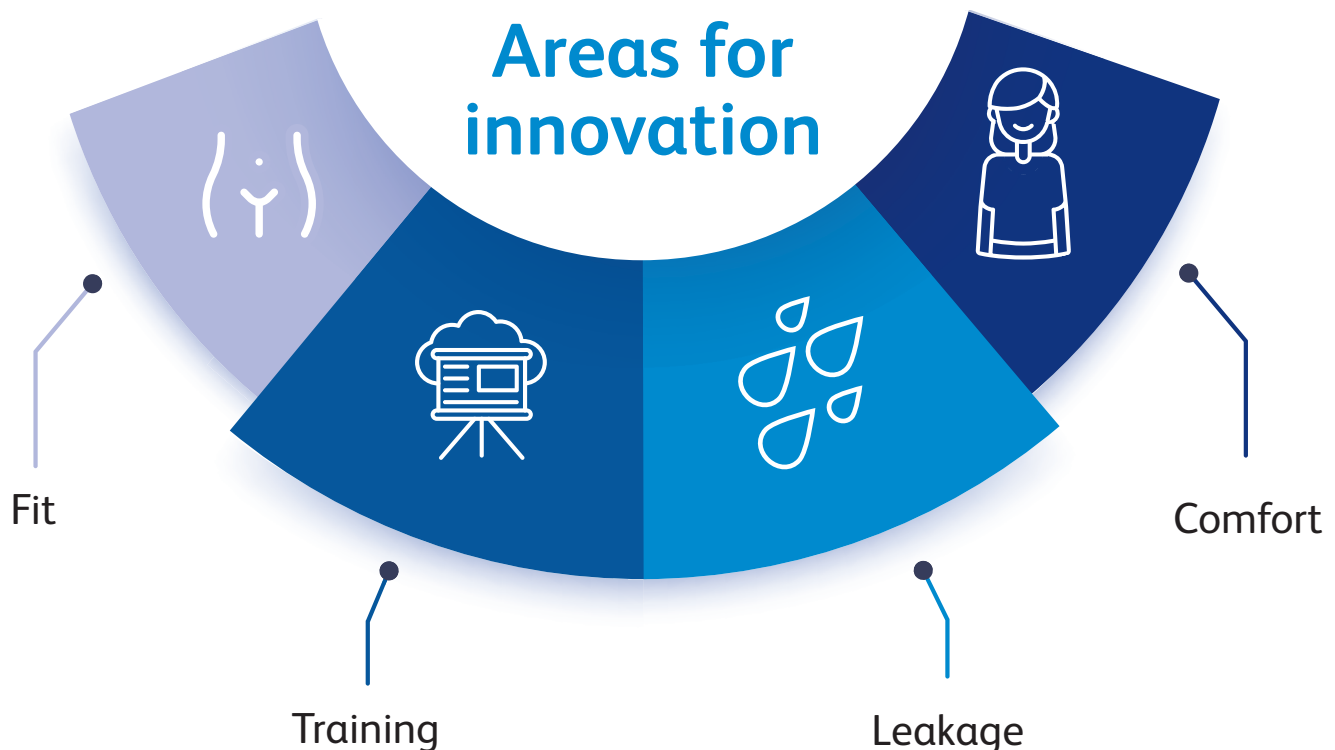
Non-invasive urine output management for
adult users with female anatomy.



Healthcare is evolving, yet key objectives remain the same.

- » Focus on reducing hospital-acquired infections
- » Improving skin health
- » Managing urine output
- » Addressing patient needs

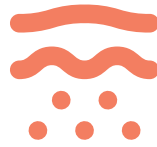
Although current alternatives exist, there is still room for new innovations to help achieve your objectives.



Limitations of current practices and products may result in:



Dislodgement



Increased skin risk



Leakage



Decreased movement

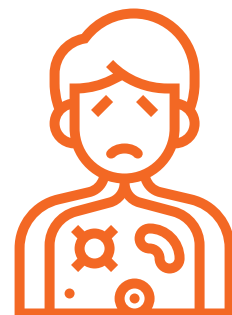
Which may contribute to frustration due to:



Increased workload



Increased \$\$



Decreased patient experience

PureWick™ Flex

Female External Catheter

Provides an innovative option that has a **higher capture rate** compared to leading female external catheters.^{1,5}



PureWick™ Flex Female External Catheter

Normal void 18mls/second²

Captures urine at a rate of 500mls in 28 seconds under a normal void with

99.9%
capture rate^{1,2}

Has a **40.1%**
average higher capture
rate than a leading
competitor under a
normal void^{1,2,4}

Heavy void at 24mls/second³

Captures urine at a rate of 500mls in 21 seconds under a heavy void with

99.3%
capture rate^{1,3}

Has a **44.4%**
higher average capture
rate than a leading
competitor under a
heavy void^{1,3,4}

1. Based upon bench testing using 18ml/second (normal void) or 24ml/second (heavy void) flow rate with n=30. Bench test results may not be indicative to clinical results. Data on file.
2. 500ml at a rate of 18ml/second.
3. 500ml at a rate of 24ml/second.
4. Bench testing of PureWick™ FEC and PrimaFit® FEC.
5. Bench testing of BD PureWick™ FEC, Sage PrimaFit® FEC, Medline Versette® FEC, and Consure Qivi™ FEC.



Enabling you to address your objectives with:

- » Bendable tubing that contours to a range of body types
- » No adhesive in the pubic area
- » Material to help keep skin dry by wicking away voided urine
- » Soft, breathable fabric designed to address patient comfort
- » Streamlined practice through included Peri-care wipes and duration label



BD—your partner
for urological
management.

PureWick™ Flex Female External Catheter



Indications: The PureWick™ Flex Female External Catheter is intended for non-invasive urine output management in adult users with female anatomy, for conditions such as urinary incontinence.

Contraindications: The PureWick™ Flex Female External Catheter should not be used on users with urinary retention.

Warnings: The PureWick™ Flex Female External Catheter is designed for single-use only. Trying to wash, sanitize or reuse it may lead to risk of infection or illness. This may damage the product and materials. The product may not work and cause injury or illness. To avoid potential skin injury, never push or rub the product against the skin during placement or removal. Do not block airflow to the product (e.g., blocking the vent hole, bedpan, barrier creams). Do not insert the product into vagina, anus, or other body orifice. Stop use if an allergic reaction occurs. Do not use on

users with frequent episodes of stool incontinence without a fecal management system in place. Do not use on users with skin irritation or breakdown at the site. Use with caution on users who had recent surgery of the external female anatomy. Do not use on users with moderate/heavy menstruation who cannot use a tampon. After use, this product may be a potential biohazard. Dispose of in accordance with applicable local, state, and federal laws and regulations.

Please consult package insert for more detailed safety information and instructions for use.

BD., Covington, GA, 30014, U.S.
844.823.5433

bd.com

BD, the BD Logo and PureWick are trademarks of Becton, Dickinson and Company and its affiliates.
© 2023 BD and its subsidiaries. All rights reserved. 2310-15 BD-109013 (2)

