

PureWick™ Flex Female External Catheter

Directions for use

Instructions for Use

Wash hands before and after this procedure. If placing or removing this product for another person, wear gloves.

Setup

1. If using continuous wall suction, always use the minimum amount of suction necessary. Connect the canister setup per facility protocol. Set suction to 40 mmHg and adjust as needed. Different setups require higher suction typically between 60-100 mmHg.

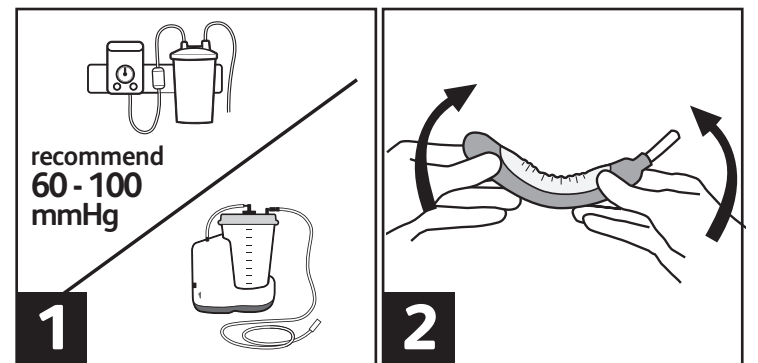
NOTE: Ensure all connections are air-tight and check for possible cracks, leaks, kinks, or occlusions. *If using PureWick™ Urine Collection System (PUCS), refer to the user instructions.

2. Before placing the product, curve it to fit the user's anatomy. This helps the product stay in place.

3. If using continuous wall suction, securely connect the product to the suction

Contents:

- 1 PureWick™ Flex Female External Catheter
- 1 Pack Peri-Care Wipes
- 1 Date/Time Duration Label



Placement

4. Have the user lie on their back with knees bent and thighs apart (frog legged) or on their side before placing the product. With their legs open, check the skin for irritation or breakdown, and clean the female anatomy with included peri-care wipes.

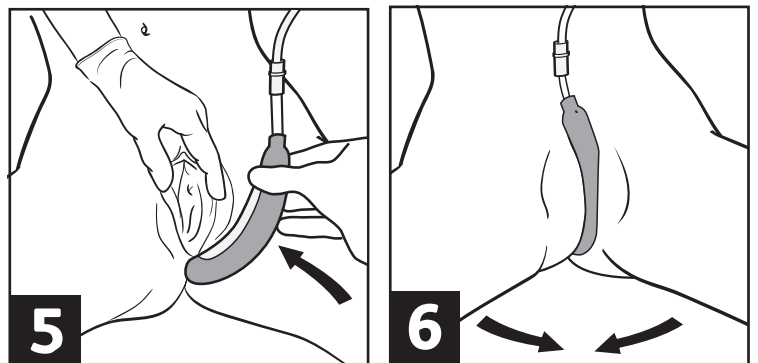
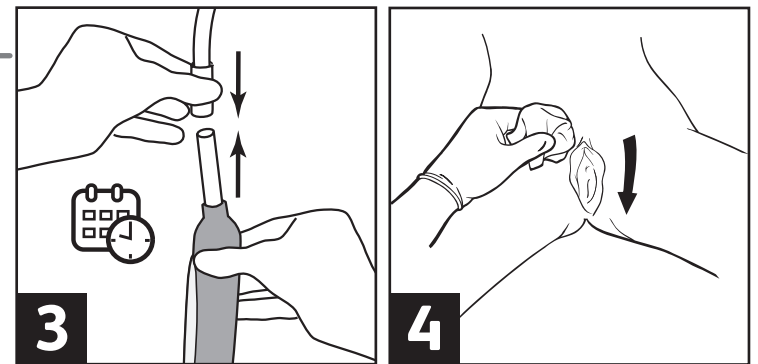
NOTE: If skin irritation or breakdown is seen, do not use the product.

5. Spread the inner labia and keep them spread while placing the product. With white wicking material side facing the user, place the bottom end of the product between the buttocks, but not as far back as to cover the anus. Gently tuck white wicking material side between the inner labia, directly against the urethra (where the urine comes out).

NOTE: Make sure the urethra is at least one inch down from the top of the white wicking material.

6. Make sure the inner labia wrap around the product and are not tucked under it. Once the product is in place, slowly close the legs and make sure the vent hole is not covered.

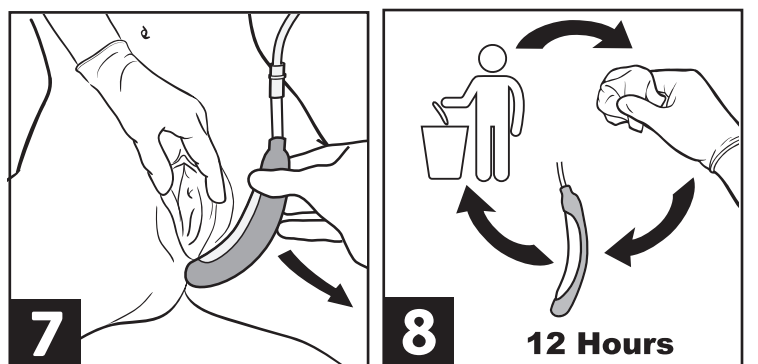
NOTE: For users with larger labia, less of the product will be visible. For users with smaller labia, more of the product will be visible.



Removal and maintenance

7. Open the legs and gently spread the labia. Gently pull the product away from the body. Keep suction on while removing the product. After use, this product may be a potential biohazard. Dispose of in accordance with applicable local, state, and federal laws and regulations.

8. Replace the product every 12 hours or if soiled with feces or blood.



Indications: The PureWick™ Flex Female External Catheter is intended for non-invasive urine output management in adult users with female anatomy, for conditions such as urinary incontinence.

Contraindications: The PureWick™ Flex Female External Catheter should not be used on patients with urinary retention.

Warnings: The PureWick™ Flex Female External Catheter is designed for single-use only. Trying to wash, sanitize or reuse it may lead to risk of infection or illness. This may damage the product and materials. The product may not work and cause injury or illness. To avoid potential skin injury, never push or rub the product against the skin during placement or removal. Do not block airflow to the product (e.g., blocking the vent hole, bedpan, barrier creams). Do not insert the product into vagina, anus, or other body orifice. Stop use if an allergic reaction occurs. After use, this product may be a potential biohazard. Dispose of in accordance with applicable local, state, and federal laws and regulations. Do not use on users with frequent episodes of stool incontinence without a fecal management system in place. Do not use on users with skin irritation or breakdown at the site. Use with caution on users who had recent surgery of the external female anatomy. Do not use on users with moderate/heavy menstruation who cannot use a tampon.

Please consult package insert for more detailed safety information and instructions for use.

BD, Covington, GA, U.S.
1.844.834.5433

bd.com



BD, the BD Logo and PureWick are trademarks of Becton, Dickinson and Company and its affiliates.
© 2024 BD. All rights reserved. 2403-01 BD-103216 (2)