

Drainage Guidelines

PleurX™ Pleural Catheter System PeritX™ Peritoneal Catheter System

These drainage instructions are not intended as a replacement for the full drainage instructions for use. Please consult the Drainage Procedure Instructions for Use for indications, warnings, cautions and full drainage procedure instructions. You may also watch our instructional drainage video at bd.com/drainage.

Getting started: Have all drainage supplies ready, then thoroughly wash your hands.



- 1 Open all packaging. Unfold blue wrapping. Place bottle near wrapping and lay access tip on blue wrapping.

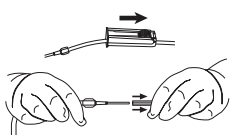


- 2 Pick each glove up by the wrist cuff and put them on.

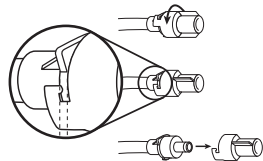


- 3 Tear open alcohol pad pouches. Place the open alcohol pad pouches on blue wrapping a short distance from sterile items.

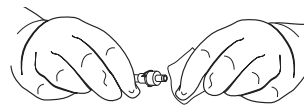
Connecting the drainage bottle: Be sure to keep the end of the catheter and access tip clean.



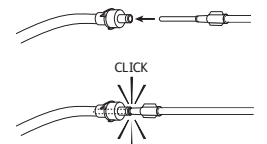
- 4 Close roller clamp completely by rolling the wheel on roller clamp toward bottle. Remove access tip cover by twisting and gently pulling. Place access tip on blue wrapping.



- 5 Take valve cap off catheter.

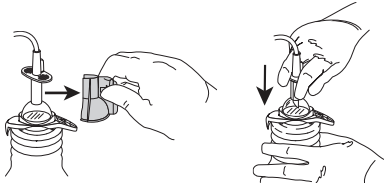


- 6 Clean around valve opening with first alcohol pad.

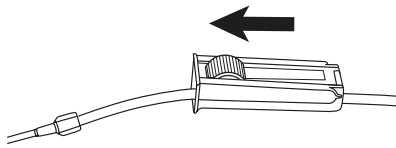


- 7 Insert the access tip into catheter valve until it clicks.

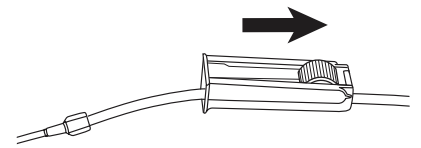
Draining fluid: Do not drain more than 1,000 mL from your chest or 2,000 mL from your abdomen at any one time.



- 8 Remove support clip from top of drainage bottle and push down T plunger.

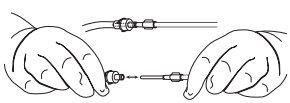


- 9 To begin draining, roll the wheel on the roller clamp away from vacuum bottle.

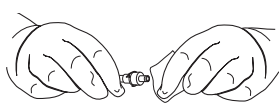


- 10 When finished draining, completely close the roller clamp by rolling the wheel toward the bottle.

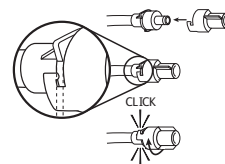
Final steps and disposal: If you have any questions or concerns, contact your doctor or nurse.



- 11 Pull access tip out of the valve and put the drainage line down.



- 12 Clean around the valve opening with second alcohol pad.



- 13 Place new cap on catheter valve and twist it until it clicks into its locked position.



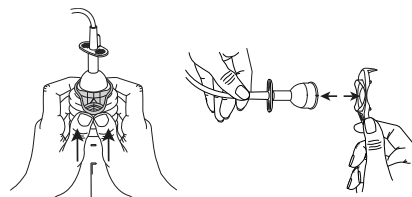
- 14 Clean around catheter site with third alcohol pad.



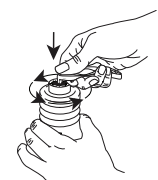
- 15 Place foam catheter pad around catheter and wind catheter on top of pad. Cover catheter with gauze pads.



- 16 Remove gloves from both hands. Apply self-adhesive dressing over pads.



- 17 Remove the bottle opener and cap from the bottle.



- 19 Empty bottle into toilet. Place bottle in a plastic bag, seal tightly and discard.

- 18 Remove the bottle opener from the drainage line and use the bottle opener to enlarge the hole in the foil seal.

PleurX™
Pleural Catheter System

PeritX™
Peritoneal Catheter System