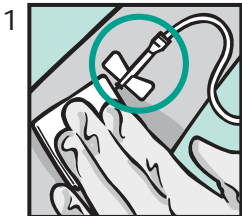
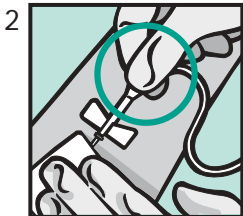


BD Vacutainer™ Safety-Lok™ Blood Collection Set

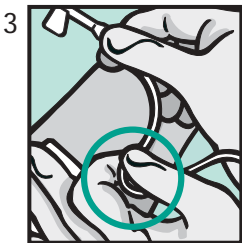
QUICK REFERENCE CARD



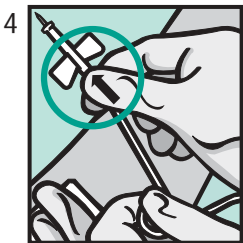
- Upon completion of collection, apply light pressure to site using three fingers as shown



- Withdraw blood collection set by grasping the translucent yellow safety shield grip area with the thumb and index finger



- With opposite hand, grasp tubing between thumb and index finger



- Push the yellow shield forward until the safety shield is locked in place

BD Vacutainer™ Safety-Lok™ Blood Collection Set

QUICK REFERENCE CARD

Things to Remember:

- Handle all biologic samples and blood collection sharps (lancets, needles, luer adapters and blood collection sets) according to the policies and procedures of your facility
- Obtain appropriate medical attention in the event of any exposure to biologic samples (for example, through a puncture injury) since they may transmit viral hepatitis, HIV (AIDS) or other infectious diseases
- Utilize any built-in needle protector if the blood collection device provides one
- BD does not recommend resheathing used needles, but the policies and procedures of your facility may differ and must always be followed
- Discard BD Vacutainer Brand Safety-Lok Blood Collection Set in the nearest sharps collector. Follow your institution's policy for safe disposal of all medical waste