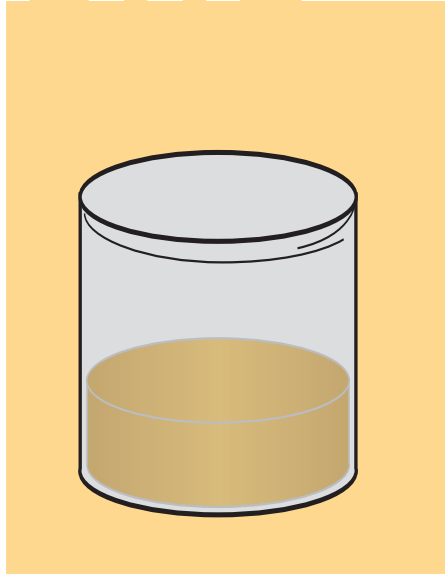


BD GeneOhm™ Cdiff

Liquid Stool or Soft Stool Specimen Collection Protocol

one



Transfer liquid stool or soft stool (but not urine) into the container. Avoid mixing toilet paper, water, or soap with the sample.

two



Label the container.

three



Ship the container to the laboratory immediately, according to standard hospital or facility procedures.

Specimens should be kept between 2°C and 25°C during transport. Protect against freezing or exposure to excessive heat.

Not for Lab Use • See package insert for test protocol.

BD, BD logo and all other trademarks are property of Becton, Dickinson and Company.
Copyright © 2009 BD
Patent protection pending



BD Diagnostics
6146 Nancy Ridge Drive
San Diego, California 92121
www.bd.com/geneohm
888-GENE OHM